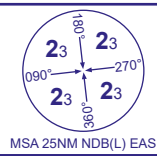


INSTRUMENT APPROACH CHART - ICAO

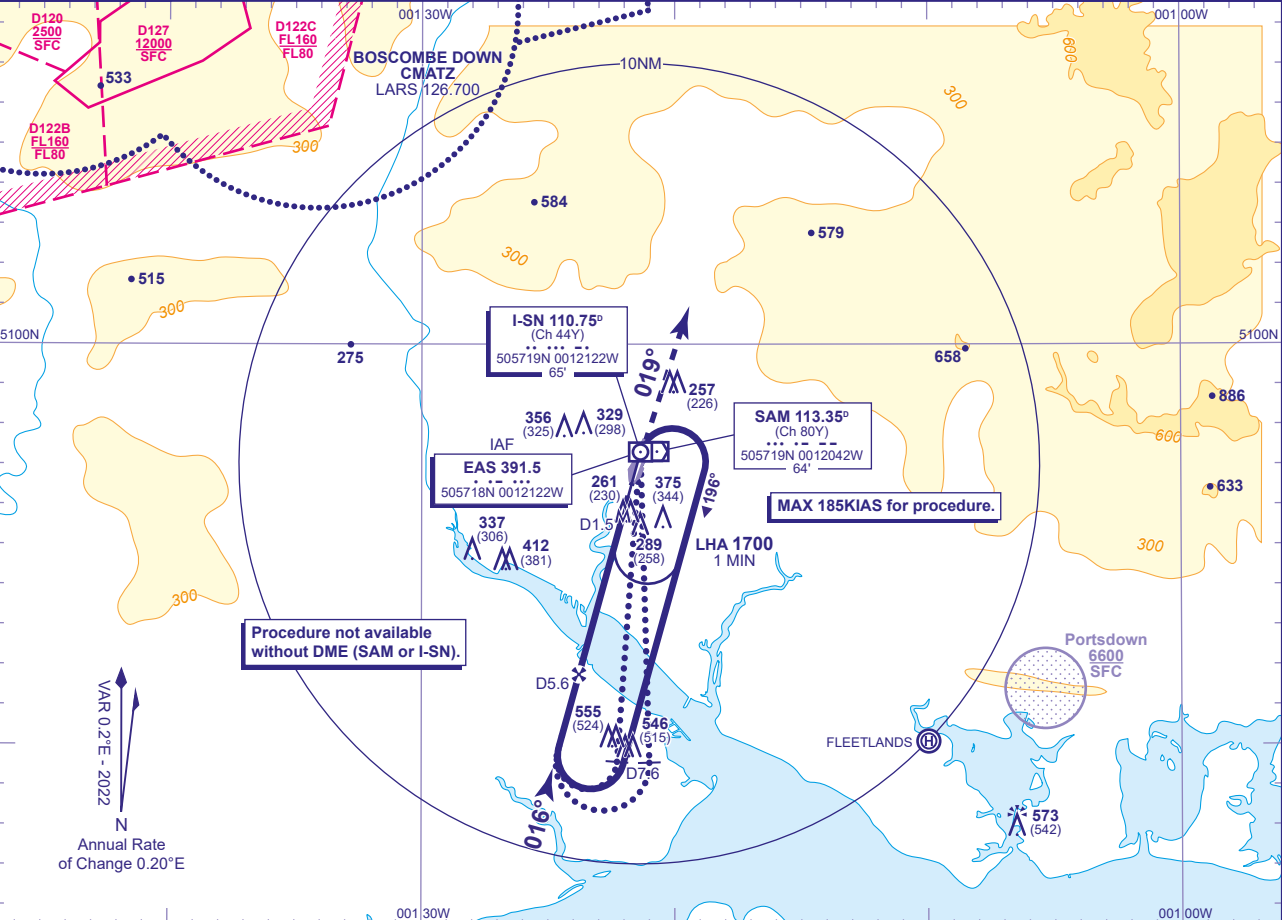
SOUTHAMPTON
NDB(L)/DME
RWY 02
(ACFT CAT A,B,C)



APP	120.230	SOLENT RADAR
	122.730	SOUTHAMPTON RADAR
TWR	118.205	SOUTHAMPTON TOWER
ATIS	130.880	SOUTHAMPTON INFORMATION

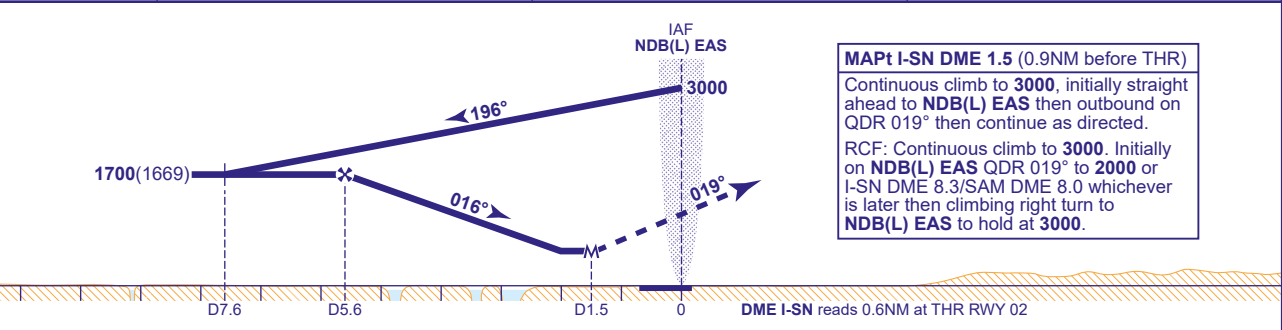
AD ELEVATION	44
THR ELEVATION	31
OBSTACLE ELEVATION	648 AMSL (617) (ABOVE THR)
BEARINGS ARE MAGNETIC	

TRANSITION ALTITUDE	6000 (see note 4)
---------------------	-------------------



RECOMMENDED PROFILE Gradient 5.28%, 321FT/NM

DME I-SN	5	4	3
ALT(HGT)	1510(1479)	1190(1159)	870(839)



Aircraft Category		A	B	C		Rate of descent	G/S KT	160	140	120	100	80
OCA (OCH)	Procedure	570(539)	570(539)	570(539)			FT/MIN	860	750	640	530	430
VM(C)OCA (OCH AAL)	Total Area	680(636)	700(656)	890(846)								

ALTERNATIVE BASE TURN PROCEDURE
Arrival to NDB(L) EAS (IAF) at 3000 fly outbound on QDR 185° (CAT A,B); QDR 179° (CAT C) descending to 1700(1669). At I-SN DME D7.6 base turn right onto extended FAT, when established continue as for main procedure.

- NOTE 1** Lowest altitude to commence procedure from hold is 2000.
2 FAT is offset 3° from RWY CL and intersects 0.5NM (I-SN DME 1.1) before THR.
3 Aircraft will normally be required to hold not lower than 2000.
4 Outside the Solent CTA notified hours of operation the Transition Altitude is 3000.

CHANGE (8/23): DME NOTE ADDED.